



# MONTHLY MEMBERSHIP PROGRESS REPORT

District 322C1

Results as of: 11/30/2015

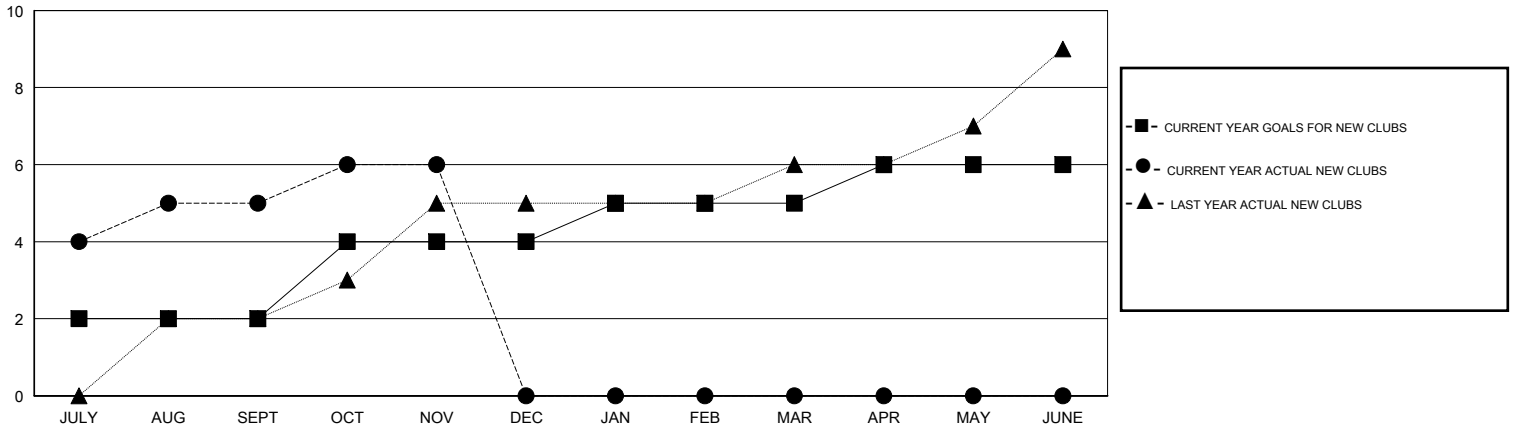
GMT: NAZMUL HAQUE

LOCATION INDIA

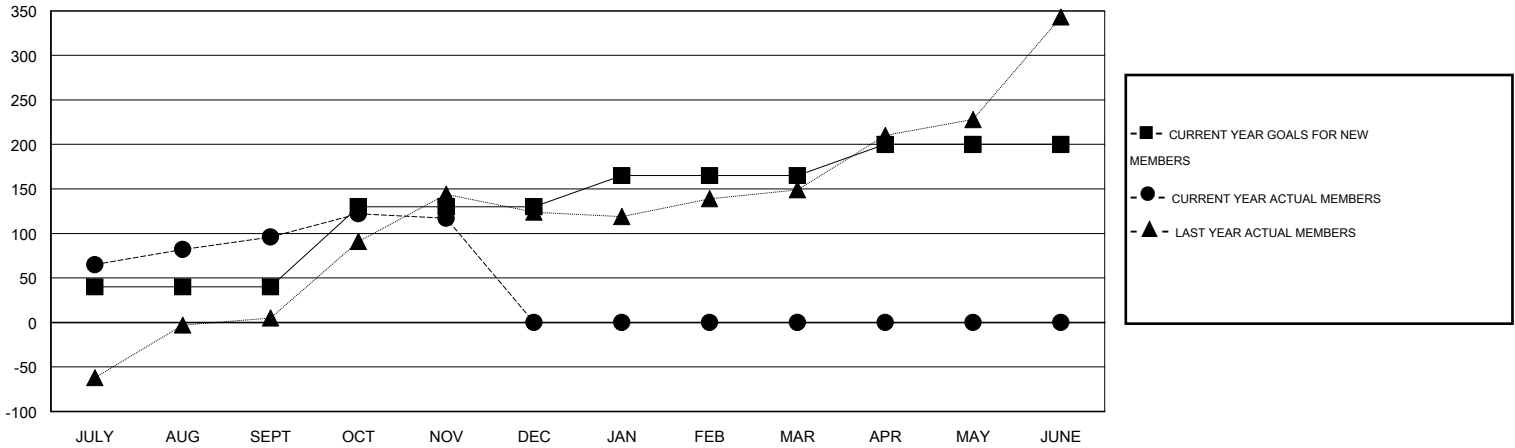
GMT CA 6

Clubs					Members				
RESULTS FOR 2015-2016					RESULTS FOR 2015-2016				
QUARTER	NEW CLUB GOAL	NEW CLUBS	DROPPED CLUBS	NET GAIN/LOSS	QUARTER	NEW MEMBER GOAL	CHARTER AND NEW MEMBERS ADDED	DROPPED MEMBERS	NET GAIN/LOSS
JULY/AUG/SEPT	2	5	1	4	JULY/AUG/SEPT	40	266	170	96
OCT/NOV/DEC	2	1	0	1	OCT/NOV/DEC	90	47	26	21
JAN/FEB/MAR	1	0	0	0	JAN/FEB/MAR	35	0	0	0
APR/MAY/JUNE	1	0	0	0	APR/MAY/JUNE	35	0	0	0

GOALS AND ACTUAL NEW CLUBS CUMULATIVE



GOALS AND ACTUAL MEMBERS CUMULATIVE



DROPPED CLUBS: 1	54 CLUBS OF 100 ADDED 1 OR MORE NEW MEMBERS	<b>GENDER DISTRIBUTION</b>
		MALE 2,390 (76.92%)
		FEMALE 717 (23.08%)
<b>DROPPED MEMBERS</b>	<a href="#">CLICK HERE FOR HEALTH ASSESSMENT DATA</a>	<b>FAMILY UNIT MEMBERS</b> 1,400
DECEASED 3		HEAD OF HOUSEHOLD 598
CLUB CANCELLED 1		NON-HEAD OF HOUSEHOLD 802
OTHER 192		
<b>TOTAL 196</b>		